



TW-01

Complete system  
online

Order key

Type

TW-01-15

Guide carriage

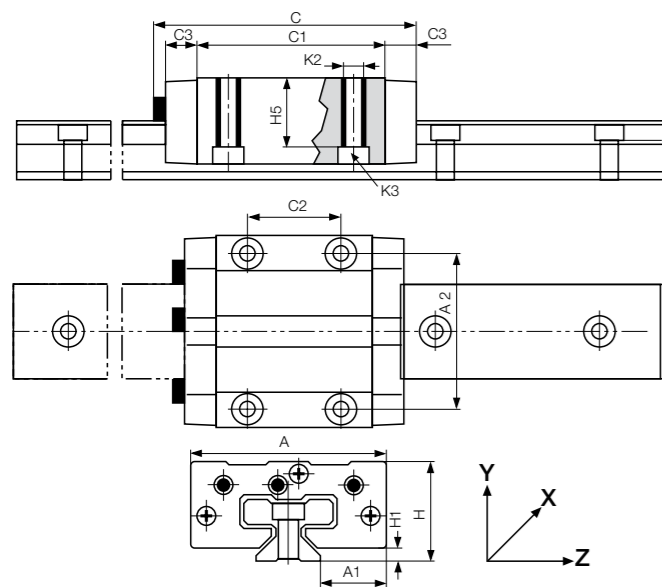
Standard

Installation size

Options:

LLY: Floating bearing in y-direction

LLZ: Floating bearing in z-direction



## Dimensions [mm]

Part No.	Weight	H	A	C	A1	A2	C1	C2	C3	H1	H5	K2	Tightening torque	K3 for screw
		±0.35			±0.35					±0.35		thread	Max.	DIN 912
	[kg]												[Nm]	
TW-01-15	0.11	24	47	74	16.0	38	50	30	9	4.0	16.0	M5	1.5	M4
TW-01-20	0.19	30	63	87	21.5	53	61	40	10	5.0	19.8	M6	2.5	M5
TW-01-25	0.29	36	70	96	23.5	57	68	45	11	5.0	24.8	M8	6.0	M6
TW-01-30	0.50	42	90	109	31.0	72	79	52	12	6.5	27.0	M10	15.0	M8



All elements can be ordered individually or as assembled systems

TW-01-20-LLY: Standard guide carriage with manually adjustable clearance, installation size 20 and floating bearing in y-direction

TK-01-20-2-500: Complete system with two standard guide carriages type 01, installation size 20 and standard guide rail, 500mm length

Can be combined with:



TS-01-...



Technical data

▶ Page 1059



TWA-01

Complete system  
online

Order key

Type

TWA-01-15

Guide carriage  
Automatic version

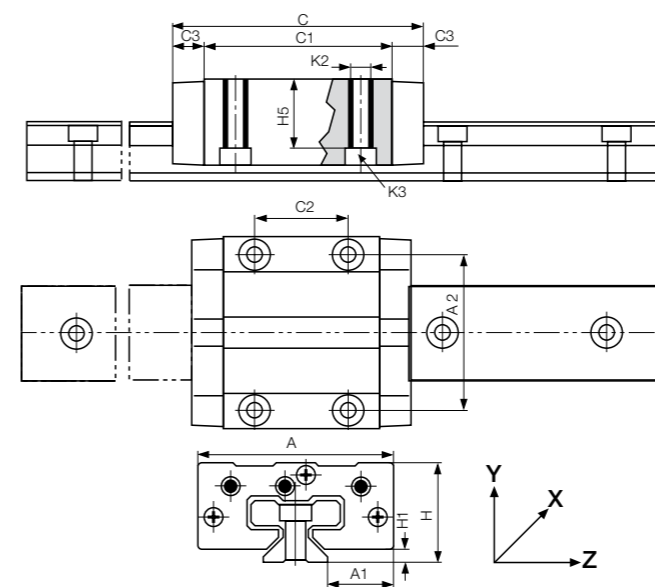
Standard

Installation size

Options:

LLY: Floating bearing in y-direction

LLZ: Floating bearing in z-direction



## Dimensions [mm]

Part No.	Weight	H	A	C	A1	A2	C1	C2	C3	H1	H5	K2	Tightening torque	K3 for screw
		±0.35			±0.35					±0.35		Thread	Max.	DIN 912
	[kg]												[Nm]	
TWA-01-15	0.11	24	47	68	16.0	38	50	30	9	4.0	16.0	M5	1.5	M4
TWA-01-20	0.19	30	63	81	21.5	53	61	40	10	5.0	19.8	M6	2.5	M5
TWA-01-25	0.29	36	70	90	23.5	57	68	45	11	5.0	24.8	M8	6.0	M6
TWA-01-30	0.50	42	90	103	31.0	72	79	52	12	6.5	27.0	M10	15.0	M8



All elements can be ordered individually or as assembled systems

TW-01-20-LLY: Guide carriage with automatic clearance adjustment, installation size 20 and floating bearing in y-direction

TKA-01-20-2-500: Complete system with two standard guide carriages type 01, automatic clearance adjustment, installation size 20 and standard guide rail, 500mm length

Can be combined with:



TS-01-...



Technical data

▶ Page 1059