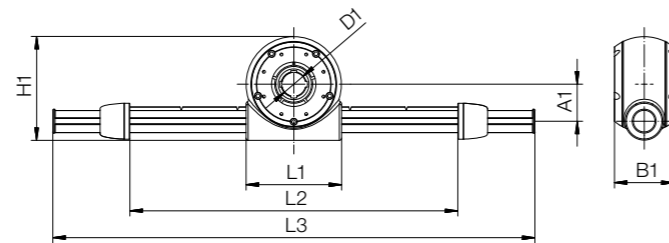


## Cantilever axis



RL-A14.0100

- Inverted gearbox available
- Gearbox linear guide available
- 6 DOF<sup>168)</sup> can also be designed
- Modules can be switched consecutively, side by side
- Standard ratios 1:4, 1:32 and 1:64
- For format adjustments and easy automation tasks



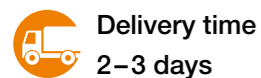
## Technical data

Part No.	Designation	Transmission	Backlash [°]	Length profile to middle L2 [mm]	Weight [g]
RL-A14.0100	Basic cantilever axis with 100mm stroke	125mm/rev	< 0.5	194.74	from 330

## Dimensions [mm]

Part No.	L1	L2	L3	H1	B1	D1	A1
RL-A14.0100	80	133 – 1,122	250 – 1,300	87	50	20	31

<sup>168)</sup> DOF: degree of freedom



Delivery time  
2–3 days

## Accessories



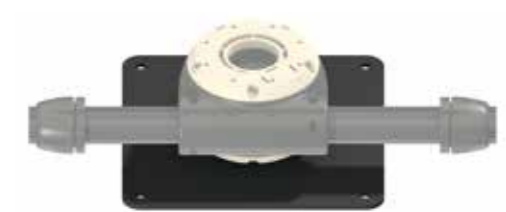
RL-A54.0102



RL-A54.0101



RL-A54.0100



RL-A54.0103



RL-A51.0101



RL-A55.0100

Images exemplary

Part No.	Designation
RL-A51.0101	Motor kit with stepper motor NEMA17, version with stranded wire
RL-A51.0102	Motor kit with stepper motor NEMA17, version with connector
RL-A51.0103	Motor kit with NEMA17 stepper motor, version with connector and encoder
RL-A51.0104	Motor kit with NEMA17 stepper motor, version with connector, encoder and brake
RL-A51.0105	Motor kit with stepper motor NEMA23, version with connector
RL-A52.0100	INI kit available for: worm gear RL-A10
RL-A52.0101	INI kit available for: cantilever axis RL-A14
RL-A220.0106	Spacer element
RL-A320.0100	Slot nut M2.5
RL-A320.0101	Slot nut M3
RL-A320.0102	Slot nut M4
RL-A55.0100	Assembly tool, tightening tool, open
RL-A55.0101	Assembly tool, tightening tool, closed



Connecting cables for NEMA stepper motors

► Page 1518