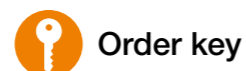




AWMR

AWMP



Order key

Type	Size	Options
AW M P - 06 - 2000		
Aluminium shaft	Metric	Precise
	Outer Ø	Shaft length [mm]

AWMP:

Solid shaft up to

Ø 25mm

Hollow shaft from

Ø 30mm

AWMR:

Tube



igus® recommendation: Linear plain bearings equipped with iglidur® J200 liners for the longest service life



Hard-anodised surfaces

▶ Page 958

Minimum saw lengths

▶ Page 961



Please contact us!

drylin® shafts can be individually machined.

Please send us your drawing or configure online.

We can then provide a quotation quickly.

▶ www.igus-asean.com/shaft-configurator

- Material: EN AW 6061/6060
- Straightness: EN 754-3
- Hardness: 75 HB
- Surface: hard-anodised
- Hardness: up to 550 HV
- Imperial shafts available upon request

Dimensions [mm]

Part No.	Design	Outer Ø	Tolerance	Insulation thickness	Inner Ø	Max. length	Weight [kg/m]
AWMP-06	Solid shaft	6	h8	–	–	3,000	0.08
AWMP-08	Solid shaft	8	h8	–	–	3,000	0.14
AWMP-10	Solid shaft	10	h8	–	–	3,000	0.22
AWMP-12	Solid shaft	12	h8	–	–	3,000	0.32
AWMR-12	Tube	12	h8	2	8	3,000	0.17
AWMP-16	Solid shaft	16	h8	–	–	3,000	0.56
AWMR-16	Tube	16	h8	2	12	3,000	0.25
AWMP-20	Solid shaft	20	h8	–	–	3,000	0.88
AWMR-20	Tube	20	h9	2	16	3,000	0.32
AWMP-25	Solid shaft	25	h8	–	–	3,000	1.37
AWMR-25	Tube	25	h9	3	19	3,000	0.59
AWMP-30	Hollow shaft	30	h8	7.5	15	3,000	1.48
AWMPV-30	Solid shaft	30	h8	–	–	3,000	1.9
AWMP-40	Hollow shaft	40	h8	10	20	3,000	2.63
AWMPV-40	Solid shaft	40	h8	–	–	3,000	3.4
AWMP-50	Hollow shaft	50	h8	11	28	3,000	3.75
AWMP-60	Hollow shaft	60	h8	11	38	3,000	4.7



Order example:

AWMP-12-500: Precision aluminium shaft, 12mm Ø, 500mm length



AWMU



Order key

Type	Size	Options
AW M U - 12 - 2000		
Aluminium shaft	Metric	Supported
	Outer Ø	Shaft length [mm]

- Material: EN AW 6061/6060
- Straightness: DIN 12020
- Hardness: 75 HB
- Surface: hard-anodised
- Hardness: up to 550 HV
- Symmetrical standard hole pattern C5 = C6

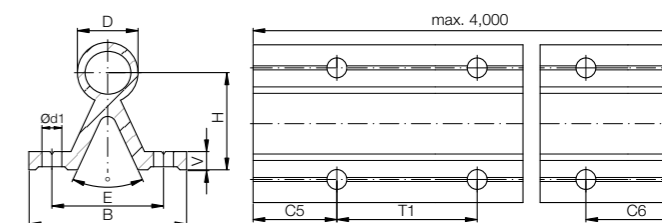


Hard-anodised surfaces

▶ Page 958

Minimum saw lengths

▶ Page 961



Dimensions [mm]

Part No.	D	B	H	V	d1	(°)	E	T1	C5/C6	Max. length	Weight [kg/m]	Iy [mm ⁴]	Iz [mm ⁴]	Wby [mm ²]	Wbz [mm ²]	
AWMU-12	12	40	22	5	4.5	50	29	75	20	57	4,000	0.75	26,600	19,700	1,330	1,091
AWMU-16	16	45	26	5	5.5	50	33	100	20	69	4,000	1.00	40,000	39,200	1,778	1,844
AWMU-20	20	52	32	6	6.6	50	37	100	20	69	4,000	1.42	76,600	86,200	2,946	3,336
AWMU-25	25	57	36	6	6.6	50	42	120	20	79	4,000	1.81	109,800	146,700	3,853	5,103
AWMU-30	30	69	42	7	9.0	50	51	150	20	94	4,000	2.69	226,900	328,700	6,577	10,049
AWMU-40 ⁸⁶⁾	40	73	50	8	9.0	50	55	200	20	119	4,000	4.06	382,100	734,800	10,468	19,160

⁸⁶⁾ The tolerance for the shaft diameter D amounts –0.15

Order example:

AWMU-16-500: supported aluminium shaft, 16mm Ø, 500mm length