

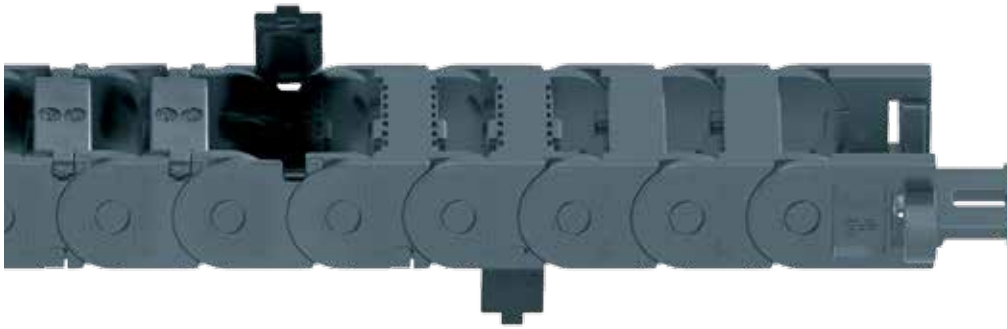
E2 micro | Series E2.15 | Product range

Next generation, stable, low noise, fast opening



E2.15E 2i.15 E2C.15

3



Series E2.15 | Snap-open along outer radius from both sides | **Standard**

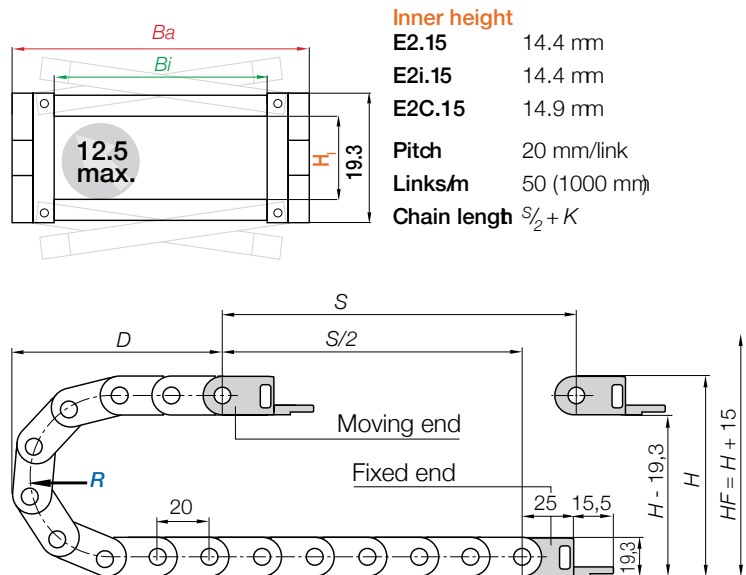
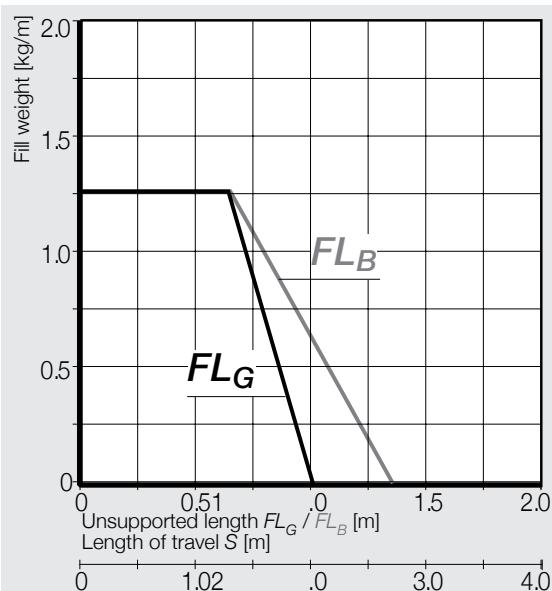
Series E2i.15 | Snap-open along inner radius from both sides

Series E2C.15 | One-piece, non snap-open e-chain®

Order configuration and dimensions

Snap open along outer radius	Snap open along inner radius	One piece non snap open	Width Bi [mm]	Width Ba [mm]	Radius R [mm]			E2.15 [kg/m]	E2i.15 [kg/m]	E2C.15 [kg/m]
E2.15.10.R.0	E2i.15.10.R.0	E2C.15.10.R.0	10	17.8	028	038	048	≈ 0.18	≈ 0.18	≈ 0.18
E2.15.13.R.0	E2i.15.13.R.0	E2C.15.13.R.0	13	20.8	028	038	048	≈ 0.19	≈ 0.19	≈ 0.19
E2.15.16.R.0	E2i.15.16.R.0	E2C.15.16.R.0	16	23.8	028	038	048	≈ 0.20	≈ 0.20	≈ 0.20
E2.15.20.R.0	E2i.15.20.R.0	E2C.15.20.R.0	20	27.8	028	038	048	≈ 0.21	≈ 0.21	≈ 0.21
E2.15.30.R.0	E2i.15.30.R.0	E2C.15.30.R.0	30	37.8	028	038	048	≈ 0.24	≈ 0.24	≈ 0.24
E2.15.40.R.0	E2i.15.40.R.0	E2C.15.40.R.0	40	47.8	028	038	048	≈ 0.26	≈ 0.26	≈ 0.26
E2.15.50.R.0	E2i.15.50.R.0	E2C.15.50.R.0	50	57.8	028	038	048	≈ 0.29	≈ 0.29	≈ 0.29

Supplement Part No. with required radius (R). Example: E2.15.20.038.0



- Inner height**
- E2.15 14.4 mm
- E2i.15 14.4 mm
- E2C.15 14.9 mm
- Pitch** 20 mm/link
- Links/m** 50 (1000 mm)
- Chain length** $S/2 + K$

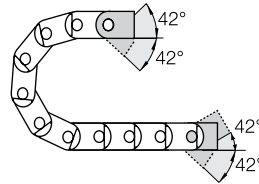
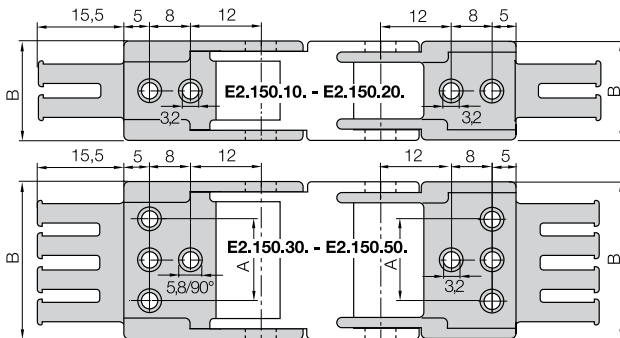
The required clearance height: $H_f + H + 15\text{mm}$ (with 0.3 kg/m fill weight)

R	028	038	048
H	75	95	115
D	68	78	88
K	130	160	195

E2 micro | Series E2-15 | Accessories

Mounting brackets, polymer one-piece | one side* or two side pivoting | locking

Moving end	two side pivoting	Fixed end
E2.150..3PZ	one side* pivoting	E2.150...4PZ
E2.150..5PZ	locking	E2.150...6PZ
E2.150..1PZ		E2.150...2PZ

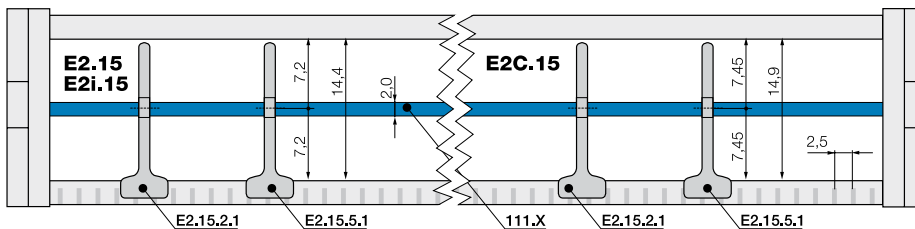


One side pivoting: Pivot angle = bending radius.
One side pivoting only to the inner radius - whether mounted to A1 to A4

3

Width Index	Part No. full set with tiewrap plates two side pivoting	Part No. full set with tiewrap plates one side* pivoting	Part No. full set with tiewrap plates locking	Dim. A [mm]	Dim. B [mm]	Number of teeth
10 ▶	E2.150.10.34PZ	E2.150.10.56PZ	E2.150.10.12PZ	-	17.8	1
13 ▶	E2.150.13.34PZ	E2.150.13.56PZ	E2.150.13.12PZ	-	20.8	1
16 ▶	E2.150.16.34PZ	E2.150.16.56PZ	E2.150.16.12PZ	-	23.8	2
20 ▶	E2.150.20.34PZ	E2.150.20.56PZ	E2.150.20.12PZ	-	27.8	2
30 ▶	E2.150.30.34PZ	E2.150.30.56PZ	E2.150.30.12PZ	22	37.8	3
40 ▶	E2.150.40.34PZ	E2.150.40.56PZ	E2.150.40.12PZ	32	47.8	4
50 ▶	E2.150.50.34PZ	E2.150.50.56PZ	E2.150.50.12PZ	42	57.8	5

Interior separation | New generation



Part No. structure
E2.150.20.34PZ A1

A... must be indicated on preassembled configurations
With strain relief tiewrap plates
Full set
Mounting bracket for selected width index

Note E2C.15: For one-piece, non snap-open please assemble the interior separation before fitting the e-chain®!
As standard separators are assembled every 2nd e-chain® link.

		Standard separator, for e-chains®	Standard - for any application
		Unassembled E215.2 Assembled E215.2.1	Is used when vertical separation is required. Due to its slot, it allows basic vertical/horizontal shelving arrangements. No snap-in option, freely movable.
		Notch separator for notch crossbar	Locks safely onto in 2,5 mm increments
		Unassembled E2.15.5 Assembled E2.15.5.1	For exact positioning in e-chains®. Recommended for side mounted applications. Abrasion-optimised, cable-friendly design of the separator.
		Full-width shelf e-chains®	Full-width shelf 110.X
		Unassembled 110.X Assembled 111.X	This option makes sense in applications with many thin cables with similar diameters. For a consequent subdivision.

Full-width shelves 110.X

Width X (mm)	Unassembled	Assembled
010	110.10	111.10
013	110.13	111.13
016	110.16	111.16

Width X (mm)	Unassembled	Assembled
020	110.20	111.20
030	110.30	111.30
040	110.40	111.40

Width X (mm)	Unassembled	Assembled
050	110.50	111.50