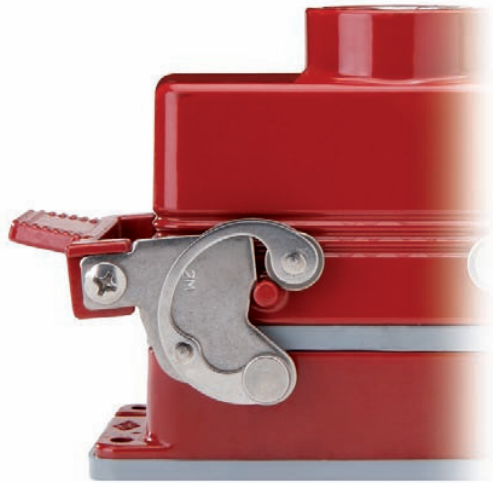


## 180 °C ENCLOSURE VERSION



### Description

Series specifically developed for industrial applications where the ambient temperatures are particularly harsh (from -40°C to +180°C).

These enclosures have supplementary insulating strips inside.

For use with inserts in self-extinguishing thermoplastic material (PPS polyphenylene sulphide).

This version is distinguished by the red colour of the enclosures.

UL certified for USA and Canada for NEMA 4, NEMA 4X and NEMA 12 protection ratings, printed on the packaging. IP65, IP66 and IP69K protection ratings.

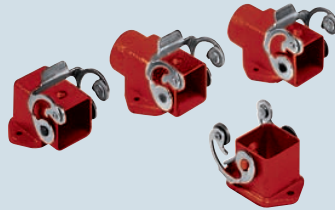
### Characteristics of materials used:

- made of die cast aluminium alloy
- chromate treated die cast
- coated with special thermoset powder with high resistance to high temperatures
- gaskets in anti-aging fluoro elastomer
- locking device with levers, springs and pegs in stainless steel
- monoblock lever handles in stainless steel (for CZ..R, CH..R 48 and MZ..R, MH..R 48 versions)
- lever handles in aluminium with special die-cast coating (for CH..R 10, 16, 24 and MH..R 10, 16, 24 versions)
- supplementary insulation inside enclosures

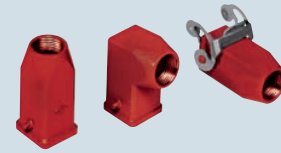


inserts:		page
<b>CK RY</b> .....	3 poles + ⊕	43
<b>CK RY</b> .....	4 poles + ⊕	43

**straight and angled bulkhead mounting housings**

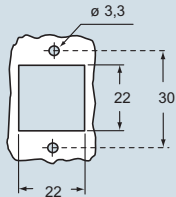


**hoods**



description	part no. (entry - Pg 11)	part no. (entry - M 20)	part no. (entry - Pg 11)	part no. (entry - M 20)
with stainless steel lever <sup>1)</sup>	<b>CKAXR 03 I</b>			
without cable gland, stainless steel lever <sup>1)</sup>	<b>CKAXR 03 IA</b>			
with cable gland, stainless steel lever <sup>1)</sup>	<b>CKAXR 03 IAP</b>	<b>MKAXR IAP20</b>		
with cable gland, stainless steel lever <sup>1)</sup> , bulkhead hole closed	<b>CKAXR 03 AP</b>	<b>MKAXR AP20</b>		
with pegs, top entry <sup>1)</sup>			<b>CKAR 03 V</b>	<b>MKAR V20</b>
with pegs, side entry <sup>1)</sup>			<b>CKAR 03 VA</b>	<b>MKAR VA20</b>
with stainless steel lever, top entry <sup>1)</sup>			<b>CKAXR 03 VG</b>	<b>MKAXR VG20</b>

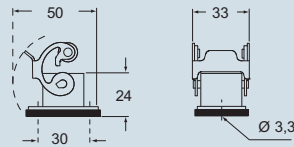
panel cut-out for enclosures, in mm



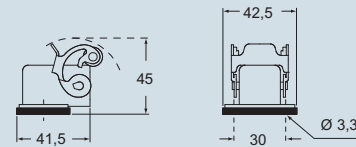
1) enclosures with IP44 protection rating.

dimensions in mm

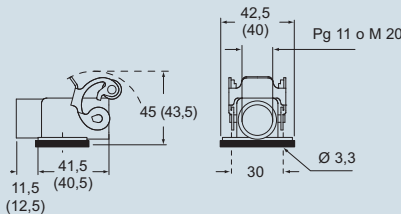
**CKAXR I**



**CKAXR IA**

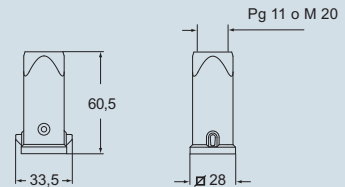


**CKAXR IAP (CKAXR AP) and MKAXR IAP (MKAXR AP)**

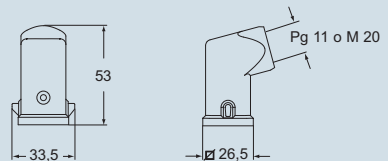


dimensions in mm

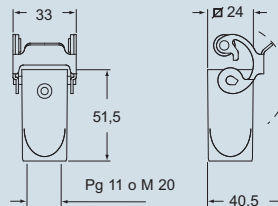
**CKAR V and MKAR V**



**CKAR VA and MKAR VA**



**CKAXR VG and MKAXR VG**



**ILME**® Type 4/4X/12



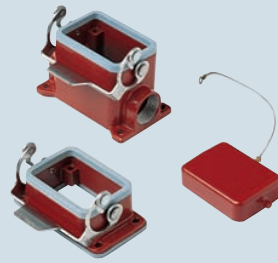
dimensions shown are not binding and may be changed without notice



inserts: page  
**CNE RY** ..... 6 poles + ⊕ 112

insert centre distance:  
**44 x 27 mm**

**bulkhead and surface mounting housings and cover**

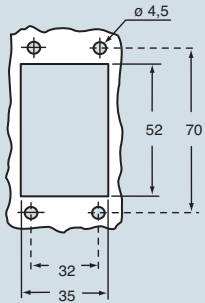


**hoods and cover**



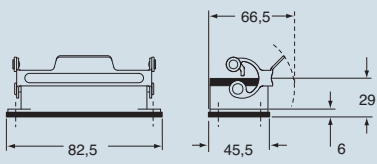
description	part no.	entry Pg	part no.	entry M	part no.	entry Pg	part no.	entry M
bulkhead mounting housing with lever	<b>CZIR 06 L</b>	--						
surface mounting housing, with lever	<b>CZPR 06 L</b>	16	<b>MZPR 06 L20</b>	20				
surface mounting housing with lever, high construction	<b>CZAPR 06 L</b>	21	<b>MZAPR 06 L32</b>	32				
cover with pegs (for enclosures)	<b>CHCR 06 L</b>	--						
enclosure with pegs, side entry					<b>CHOR 06 L13</b>	13.5	<b>MHOR 06 L20</b>	20
enclosure with pegs, side entry, high construction					<b>CAOR 06 L21</b>	21	<b>MAOR 06 L32</b>	32
enclosure with pegs, top entry					<b>CHVR 06 L13</b>	13.5	<b>MHVR 06 L20</b>	20
enclosure with pegs, top entry, high construction					<b>CAVR 06 L21</b>	21	<b>MAVR 06 L32</b>	32
cover with lever (for hoods)	<b>CZCR 06 LG</b>	--						

panel cut-out for bulkhead mounting housings in mm

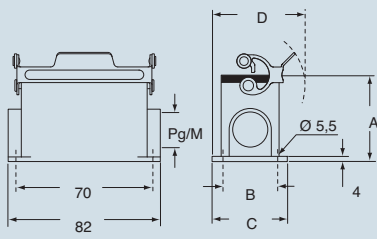


dimensions in mm

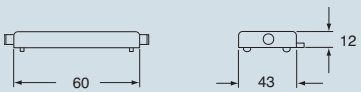
**CZIR L**



**CZPR L - CZAPR L and MZPR L - MZAPR L**

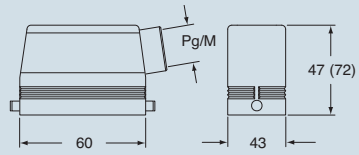


**CHCR L**

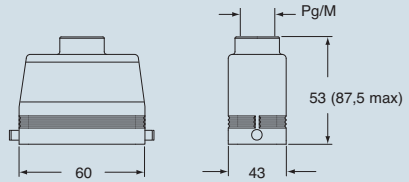


dimensions in mm

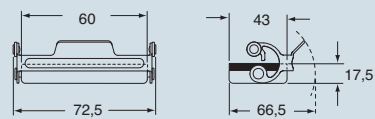
**CHOR L (CAOR L) and MHOR L (MAOR L)**



**CHVR L (CAVR L) and MHVR L (MAVR L)**



**CZCR LG**



**ILME**® Type 4/4X/12



dimensions shown are not binding and may be changed without notice

type	A	B	C	D
<b>CZPR L / MZPR L</b>	53	40	52	69.5
<b>CZAPR L / MZAPR L</b>	74	45	57	72

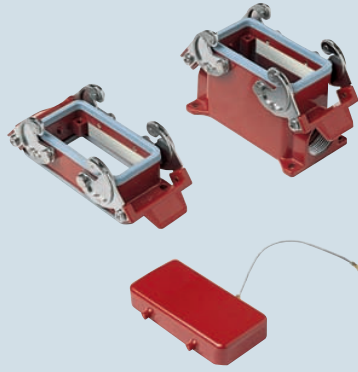
180 °C - size 44.27



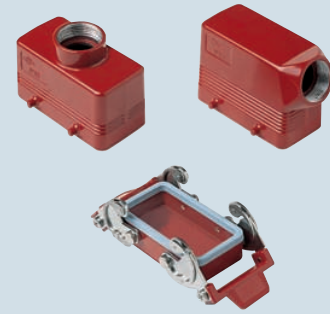
inserts: page  
**CNE RY** ..... 10 poles + ⊕ 113

insert centre distance:  
**57 x 27 mm**

**bulkhead and surface mounting housings and cover**



**hoods and cover**

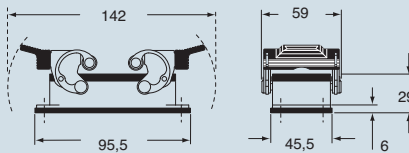


description	part no.		part no.		part no.		part no.	
	entry Pg	entry M	entry Pg	entry M	entry Pg	entry M	entry Pg	entry M
bulkhead mounting housing, with lever								
surface mounting housing, with levers								
surface mounting housing, with levers, high construction								
cover with 4 pegs (for enclosures)								
enclosure with pegs, side entry								
enclosure with pegs, side entry, high construction								
enclosure with pegs, top entry								
enclosure with pegs, top entry, high construction								
cover with 2 levers (for hoods)								

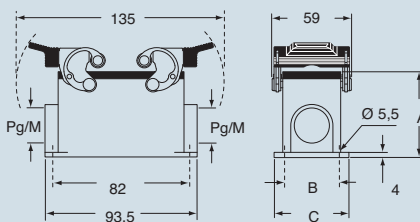
\*\* can only be used with a complete cable gland (to be purchased separately)

dimensions in mm

**CHIR**



**CHPR - CAPR and MHPR - MAPR**



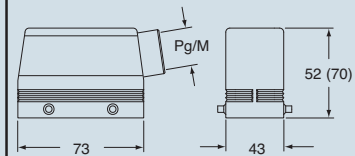
type	A	B	C
CHPR / MHPR	57	40	52
CAPR / MAPR	74	45	57

**CHCR**

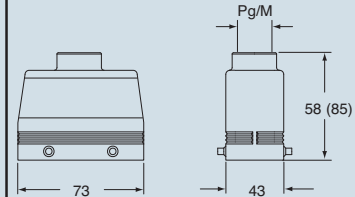


dimensions in mm

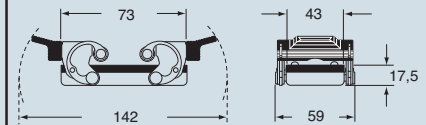
**CHOR (CAOR) and MHOR (MAOR)**



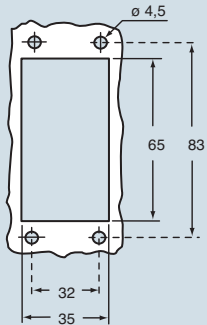
**CHVR (CAVR) and MHVR (MAVR)**



**CHCR G**



panel cut-out for bulkhead mounting housings in mm



**CRUS**® Type 4/4X/12



dimensions shown are not binding and may be changed without notice

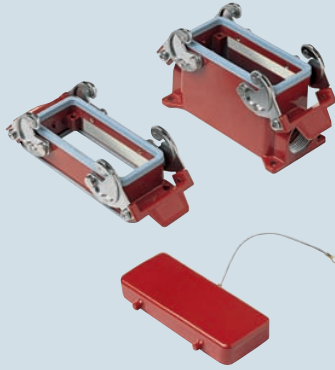
180 °C - size 57.27



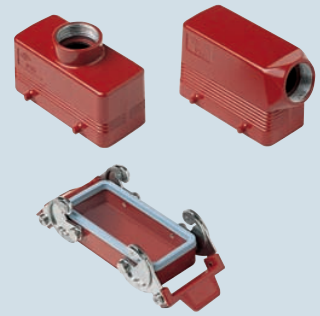
inserts:		page
<b>CNE RY</b> .....	16 poles + ⊕	114
<b>CP RY</b> .....	6 poles + ⊕	149

insert centre distance:  
77.5 x 27 mm

**bulkhead and surface mounting housings and cover**

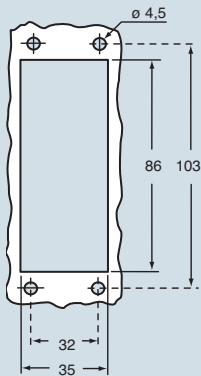


**hoods and cover**



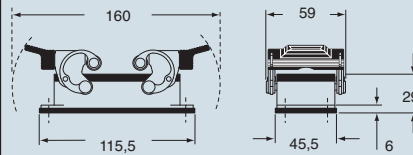
description	part no.		entry		part no.		entry		
			Pg	M			Pg	M	
bulkhead mounting housing with levers	<b>CHIR 16</b>		—						
surface mounting housing, with levers, high construction	<b>CAPR 16.21</b>		21		<b>MAPR 16.32</b>		32		
cover with 4 pegs (for enclosures)	<b>CHCR 16</b>								
enclosure with pegs, side entry							<b>CHOR 16</b>	21	
enclosure with pegs, side entry, high construction							<b>CAOR 16.21</b>	21	
enclosure with pegs, top entry							<b>CHVR 16</b>	21	
enclosure with pegs, top entry, high construction							<b>CAVR 16.21</b>	21	
cover with 2 levers (for hoods)							<b>CHCR 16 G</b>		
								<b>MHOR 16.25</b>	25
								<b>MAOR 16.40</b>	40
								<b>MHVR 16.25</b>	25
								<b>MAVR 16.40</b>	40

panel cut-out for bulkhead mounting housings in mm

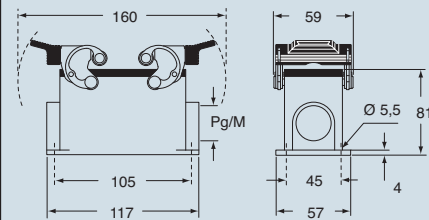


dimensions in mm

**CHIR**



**CAPR and MAPR**

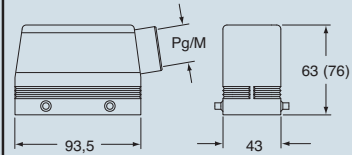


**CHCR**

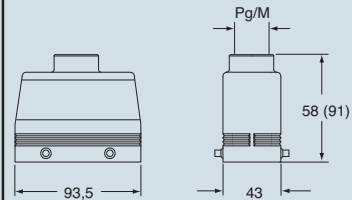


dimensions in mm

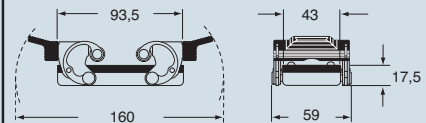
**CHOR (CAOR) and MHOR (MAOR)**



**CHVR (CAVR) and MHVR (MAVR)**



**CHCR G**



**CALUS**® Type 4/4X/12



dimensions shown are not binding and may be changed without notice

180 °C - size 77.27