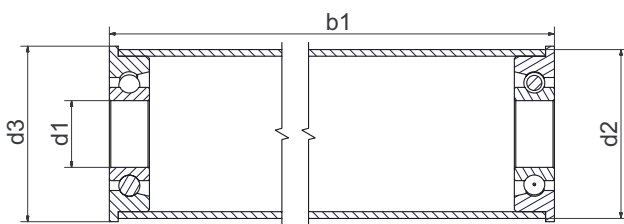


xirodur® B180 flange ball bearing with aluminium tube



Order key

Type

Material

BBT-AC 38-6000-B180-10-ES

Ball bearing-guide roller	Aluminium tube	Outer Ø	Dimensions acc. to DIN 625-1	Race material	Cage material	Ball material
---------------------------	----------------	---------	------------------------------	---------------	---------------	---------------



Flange ball bearing also available separately
► Page 802

Cage material

10: PA

30: xirodur® B180

Ball material

ES: Stainless steel

Dimensions [mm]

Inner Ø d1	Outer Ø d2	Flange Ø d3	Length b1	Part No.
8	30	29.9	25 – 1,500	BBT-AC30-608-B180-10-ES
10	30	29.9	25 – 1,500	BBT-AC30-6000-B180-10-ES
12	30	29.9	25 – 1,500	BBT-AC30-6001-B180-10-ES
10	38	37.9	25 – 1,500	BBT-AC38-6000-B180-10-ES
12	38	37.9	25 – 1,500	BBT-AC38-6001-B180-10-ES
15	38	37.9	25 – 1,500	BBT-AC38-6002-B180-10-ES
17	38	37.9	25 – 1,500	BBT-AC38-6003-B180-10-ES
20	50	49.9	25 – 1,500	BBT-AC50-6004-B180-30-ES
20	60	59.9	25 – 1,500	BBT-AC60-6004-B180-30-ES



Order example:

BBT-AC38-6000-B180-10-ES, L=500 mm: Aluminium tube with 2 flange ball bearings with race material xirodur® B180, PA cage and stainless steel balls, total length 500 mm



Available from stock



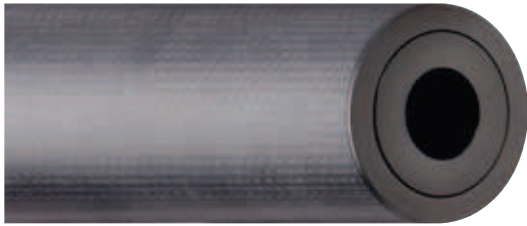
Online configurator for xiros® system-solutions

► www.igus.eu/xirosAlu

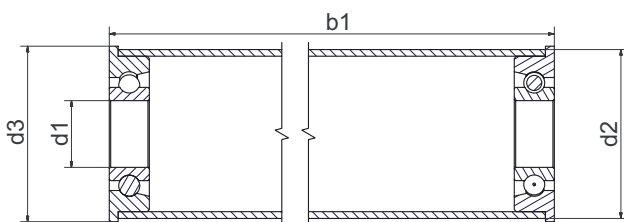
xiros® guide roller | Product range

xiros®

xiros® system solution – carbon tube with flange ball bearings



Carbon tube with xirodur® S180 flange ball bearings as ESD version optional



Order key

Type	Material
------	----------

BBT-CF 50-6004-S180-30-ES

Ball bearing-guide roller	Carbon tube	Outer Ø	Dimensions acc. to DIN 625-1	Race material	Cage material	Ball material
---------------------------	-------------	---------	------------------------------	---------------	---------------	---------------

Cage material

30: xirodur® B180

Ball material

ES: Stainless steel

Dimensions [mm]

Inner Ø	Outer Ø	Flange Ø	Length	Part No.
d1	d2	d3	b1	
20	50	49.9	25 – 1,500	BBT-CF50-6004-S180-10-ES



Order example:

BBT-CF50-6004-S180-30-ES, L=200 mm: Carbon tube with 2 flange ball bearings with race material xirodur® S180, xirodur® B180 cage and stainless steel balls, total length 200 mm



Available upon request

With xirodur® F180 as ESD version available upon request