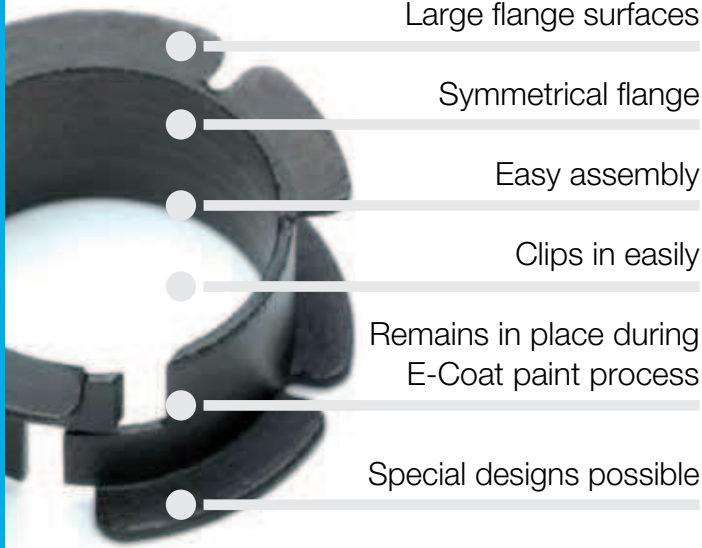


# iglidur® MDM Double Flange Bearing

Clip-in double flange bearing with symmetrical flange. The large second flange allows the bearing to take high axial forces, and the bearing is secure even when fitted to wide toleranced bores.



Large flange surfaces

Symmetrical flange

Easy assembly

Clips in easily

Remains in place during  
E-Coat paint process

Special designs possible



## When to use it?

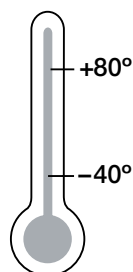
- When the axial security of an iglidur® clip bearing is not sufficient
- When there is a housing with very wide tolerance
- For high axial loads



## When not to use it?

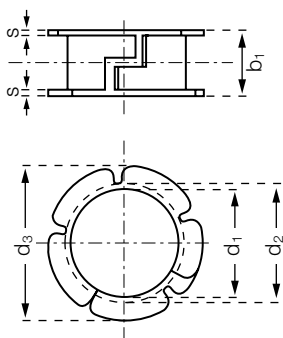
- When an automated assembly is required
  - ▶ **iglidur® MKM, page 513**
- When the iglidur® clip bearings offer adequate fit
  - ▶ **iglidur® Clip Bearings, page 503**
- When a large bearing length is required
  - ▶ **iglidur® MKM, page 513**

## Temperature



# iglidur® Double Flange Bearing | Product Range

## Double Flange Bearing



Order key

**MDM-1213-06**



- Sheet metal thickness
- Outer diameter d2
- Inner diameter d1
- Metric
- Type (Form D)
- Material iglidur® M250

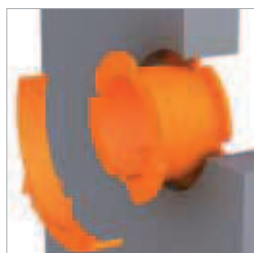
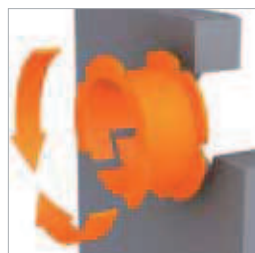


Material:

iglidur® M250 ► page 107

### Dimensions [mm]

Part number	d1	d2	d3	b1	s
MDM-1213-06	12	13	16.5	7	0.5



**delivery** available  
**time** from stock



**prices** price list online  
www.igus.eu/eu/mdm



**order** part number  
**example** MDM-1213-06

# My Sketches

