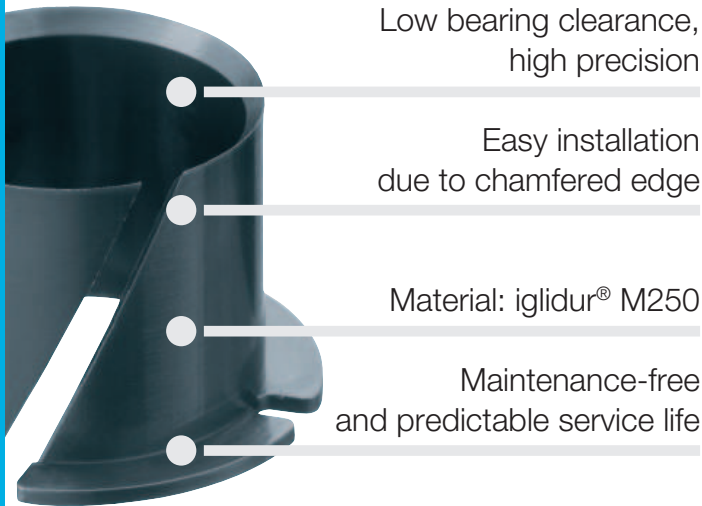


## iglidur® Clips2

**Easy assembly due to angle slot.** These iglidur® M250 self lubricating plain bearings give impact strength, vibration dampening, and wear resistant properties. The bearings are designed for use in applications which vibration dampening is necessary, for example, in fitness and packaging machines.



Low bearing clearance,  
high precision

Easy installation  
due to chamfered edge

Material: iglidur® M250

Maintenance-free  
and predictable service life



### When to use it?

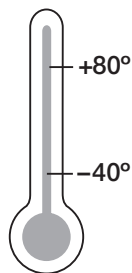
- When a simple assembly (by hand) is required
- When there is a very imprecise housing bore
- When a simple and cost effective bearing solution is sought



### When not to use it?

- When the bearing should be secured by press fit
  - ▶ **iglidur® M250, page 107**
- When continuous temperatures of above +80° C occur
  - ▶ **iglidur® G, page 61**
- When extremely high surface pressures occur
  - ▶ **iglidur® G, page 61**

### Temperature



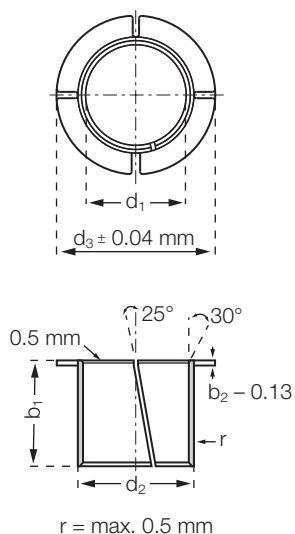
### Product range

1 style  
 Ø 4–25 mm  
 more dimensions  
 on request



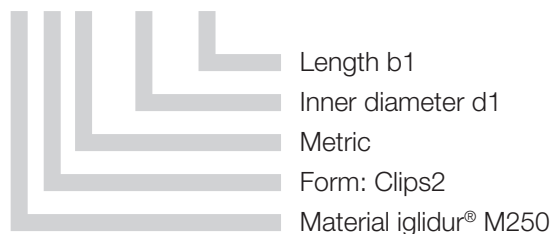
# igidur® Clips2 | Product Range

## Clips2



### Order key

**MYM-04-04**



### Material:

igidur® M250 ► page 107

### Dimensions [mm]

Part number	d1	d1-Tolerance*	d2**	d3 ±0.40	b1 -0.40	b2 -0.13
MYM-04-04	4	+0.025/+0.075	5.20	7.00	4.00	0.60
MYM-05-05	5	+0.025/+0.075	6.20	8.00	5.00	0.60
MYM-06-06	6	+0.025/+0.075	7.20	9.50	6.00	0.60
MYM-08-08	8	+0.025/+0.075	9.60	12.00	8.00	0.80
MYM-10-10	10	+0.025/+0.075	11.60	15.00	10.00	0.80
MYM-12-12	12	+0.025/+0.075	13.60	18.00	12.00	0.80
MYM-14-14	14	+0.025/+0.075	15.60	21.00	14.00	0.80
MYM-16-16	16	+0.025/+0.075	17.60	24.00	16.00	0.80
MYM-20-20	20	+0.025/+0.075	21.60	30.00	20.00	0.80
MYM-25-25	25	+0.025/+0.075	27.40	37.50	25.00	1.20

\* d1 measurement is measured with a plug gauge after fitting into a reference housing d2 (+0.005)

\*\* Recommended housing bore tolerance: H9



delivery available  
time from stock

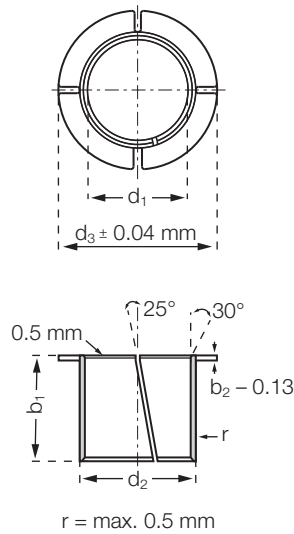


prices price list online  
www.igus.eu/eu/clips2



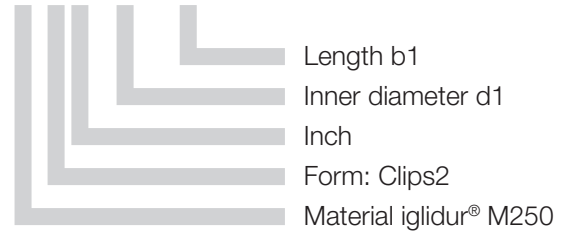
order part number  
example MYM-04-04

## Clips2



### Order key

**MYI-04-04**



### Material:

iglidur® M250 ► page 107

### Dimensions [Inch]

Part number	d1	Shaft diameter		d2	Housing bore		d3	b1	b1- Tolerance	b2
		min.	max.		min.	max.				
MYI-03-03	3/16	.1875	.1865	0.2339	.2351	.2339	19/61	3/16	-0.016	0.0252
MYI-04-04	1/4	.0025	.2490	0.2965	.2979	.2965	13/32	1/4	-0.016	0.0252
MYI-05-05	5/16	.3125	.3115	0.3744	.3758	.3744	1/2	5/16	-0.017	0.0299
MYI-06-06	3/8	.3750	.3740	0.4370	.4387	.4370	19/32	3/8	-0.017	0.0299
MYI-07-07	7/16	.4375	.4365	0.4996	.5013	.4996	21/32	7/16	-0.017	0.0299
MYI-08-06	1/2	.5000	.4990	0.5618	.5635	.5618	3/8	3/4	-0.018	0.0299
MYI-08-08	1/2	.5000	.4990	0.5618	.5635	.5618	3/4	1/2	-0.018	0.0299
MYI-10-07	5/8	.6250	.6240	0.6870	.6887	.6870	15/16	7/16	-0.018	0.0299
MYI-10-10	5/8	.6250	.6240	0.6870	.6887	.6870	15/16	5/8	-0.018	0.0299
MYI-10-18	5/8	.6250	.6240	0.6870	.6887	.6870	15/16	1 1/8	-0.018	0.0299
MYI-12-12	3/4	.7500	.7490	0.8118	.8139	.8118	1 1/8	3/4	-0.019	0.0299
MYI-12-18	3/4	.7500	.7490	0.8118	.8139	.8118	1 1/8	1 1/8	-0.019	0.0299
MYI-14-7.5	7/8	.8750	.8740	0.9370	.9391	.9370	1 5/16	15/32	-0.019	0.0299
MYI-14-14	7/8	.8750	.8740	0.9370	.9391	.9370	1 5/16	7/8	-0.019	0.0299
MYI-16-14	1	1.0000	.9985	1.0933	1.0954	1.0933	1 1/2	7/8	-0.020	0.0449
MYI-16-16	1	1.0000	.9985	1.0933	1.0954	1.0933	1 1/2	1	-0.020	0.0449

**delivery** available  
**time** from stock

**prices** price list online  
[www.igus.eu/eu/clips2](http://www.igus.eu/eu/clips2)

**order** part number  
**example** MYI-04-04