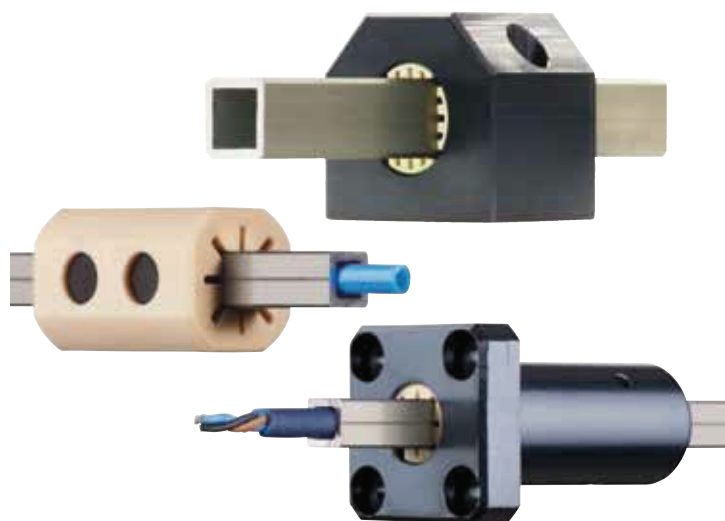


# drylin® Q Square Guide | Product Range

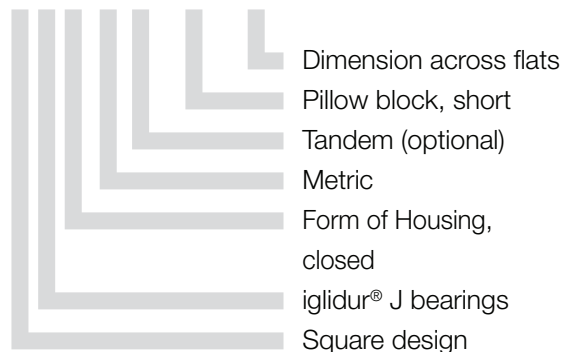
## Torque-resistant square guide



Order key



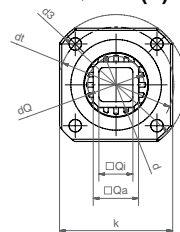
### QJRMT-05-20



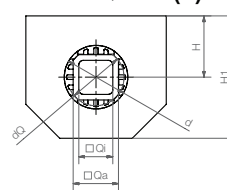
- Square section tube made of hard-anodized aluminum
- Torque resistant without 2nd guidance
- Tolerates moments up to 3 Nm (Size10), 10 Nm (size 20)
- Space saving and low weight
- Cable guidance possible in tube

### drylin® Q-20

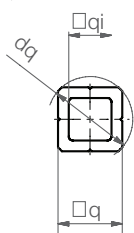
#### QJFM(T)



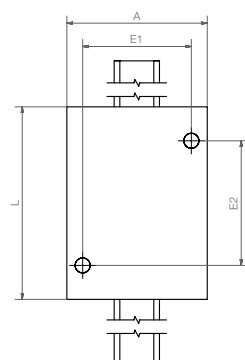
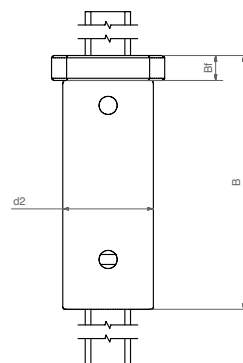
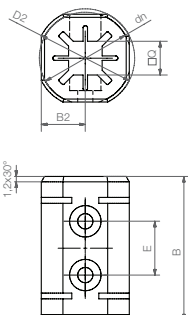
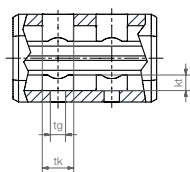
#### QJRM(T)



#### AWMQ



#### New! QJRMP-01-10



## Dimensions [mm]

Part number	Weight	q	dQ	qi
drylin® Q rail profile	[kg/m]			±0.02
AWMQ-10 <b>New!</b>	0.082	7.5	10	5
AWMQ-20	0.46	20	25	15

Part number	Weight	M max.	B	B2	dn	E	tk	tg	kt
drylin® Q Housing Bearing	[g]	[Nm]							
QJRMP-01-10 <b>New!</b>	11.3	3	32	9.8	22	12	7	3.4	3.5

Part number	Weight	A	H	H1	dQ	Qa	Qi	E1	E2	d	L
Q20-Gehäuselager	[kg]		±0.02					±0.15	±0.15		
QJRMT-05-20	0.55	62	27	54	25	20	15	48	55	28	85
QJRM-05-20	0.25	62	27	54	25	20	15	48	-	28	40

Part number	Weight	k	d2	Bf	dQ	Qa	Qi	d3	dt	d	B
drylin® Q Flange Bearing	[kg]		h7					±0.15	±0.15		
QJFMT-02-10 <b>New!</b>	0.038	30	19	9	10	7.5	5	39	29	12	52
QJFMT-01-20	0.24	50	40	11	25	20	15	62	51	28	112
QJFMT-02-20	0.24	50	40	11	25	20	15	62	51	28	112
QJFM-02-20	0.14	50	40	11	25	20	15	62	51	28	58