

drylin® SLW | Delivery Program | Trapezoidal Thread

SLW-ES – Stainless steel

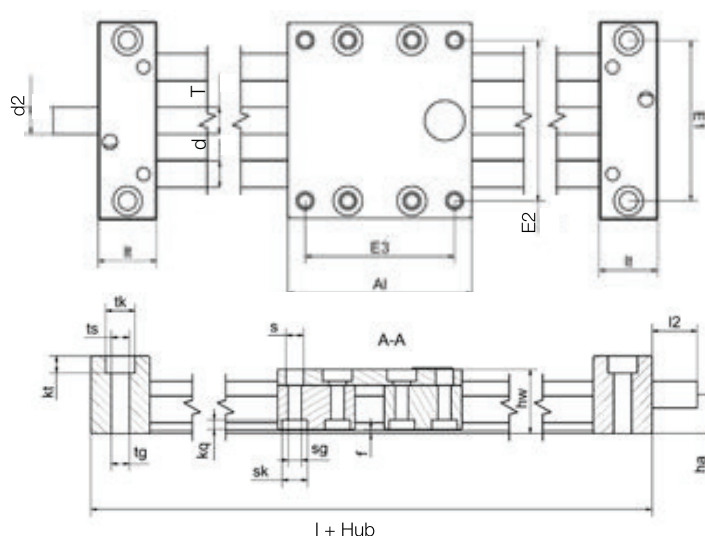
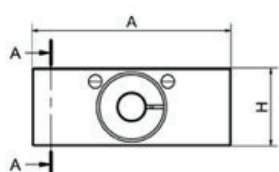


- Stainless steel version with corrosion-resistant steel components (1.4305, 1.4408 or rather 1.4571)
- Choice of bearing material:
iglidur® J = Standard
iglidur® A180 = FDA
iglidur® X = High temperature
- Available accessories
▶ page 1065



Order key
complete ▶ page 1046

SLW-ESJ-1040



Technical Data

Part number	Shaft-Ø	Max. stroke length	Weight	Additional (per 100 mm)	Max. static load capacity	
	[mm]				[kg]	axial [N]
SLW-ESJ-1040	10	750	1.4	0.2	700	2,800
SLW-ESX-1040	10	750	1.4	0.2	700	2,800
SLW-ESA180-1040	10	750	1.4	0.2	700	2,800
SLW-ESJ-2080	20	1,000	5.7	0.64	1,600	6,400
SLW-ESA180-2080	20	1,000	5.7	0.64	1,600	6,400

Dimensions [mm]

Part number	A	Al	H	E1	E2	E3	l	hw	f	lt	tk	ts	tg
	-0.3	-0.3	±0.15	±0.15	±0.15	±0.1							
SLW-ES-1040	74	100	29	60	60	87	144	24	1.5	22	11	6.8	M8
SLW-ES-2080	134	150	46	116	116	132	206	44	1.5	28	15	8.6	M10

Part number	kt	s	sk	sg	kq	d	T	l2	d2	ha
	±0.1								Standard	
SLW-ES-1040	6.4	6.6	9.5	M6	4.4	10	TR10x2	17	TR10x2*	14.5
SLW-ES-2080	8.6	9.0	14	M8	5.5	20	TR18x4	26	12h9	23.0

* lead screw end unmachined

delivery time 2-3 days

prices price list online
www.igus.eu/eu/drylinSLW