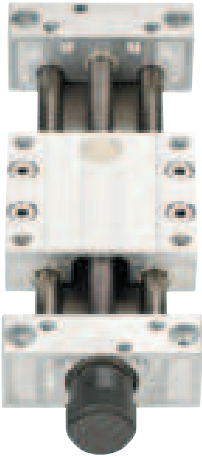


SLW – Compact

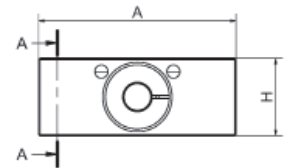
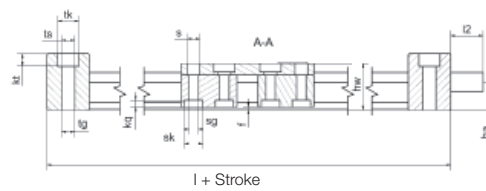
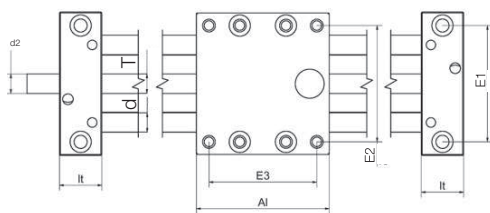


- Flat and compact
 - High torsional stability stiffness
 - Fully supported
 - Hard anodized aluminum rail
 - 5 types
 - Available accessories
- page 922



Order key
complete ► page 897

SLW-1040



Technical Data

Part number	Max. length of stroke [mm]	Shaft weight [kg]	Additional (per 100 mm) [kg]	Max. static load- bearing capacity		End block material
				axial [N]	radial [N]	
SLW-0630	300	0.2	0.08	50	200	plastic
SLW-1040	750	0.7	0.10	700	2,800	zinc diecasting
SLW-1080	750	0.9	0.20	700	2,800	aluminum
SLW-1660	750	1.5	0.30	1,200	4,600	aluminum
SLW-2080	1,000	3.0	0.40	1,600	6,400	aluminum

Dimensions [mm]

Part number	A	Al**	H	E1	E2	E3	I	hw	f	lt	tk	ts	tg
	-0.3	-0.3		±0.15	±0.15	±0.15				±0.1			
SLW-0630	54	60	20	40	45	51	100	17.5	1.2	20	11	6.2	-
SLW-1040	74	69	29	60	60	56	113	24	1.5	22	11	7.1	M8
SLW-1080	108	100	29	94	94	87	144	24	1.5	22	11	7.1	M8
SLW-1660	104	100	37	84	86	82	150	35	1.5	25	15	9.0	M10
SLW-2080	134	150	46	116	116	132	206	44	1.5	28	15	8.6	M10

Part number	kt	s	sk	sg	kq	d	T	l2	d2	ha
	±0.1								Standard	
SLW-0630	8.0	4.5	7.0	M4	2.0	6	M8	15	M8	9.5
SLW-1040	6.4	6.6	9.5	M6	4.4	10	TR 10 x 2	17	TR 10 x 2*	14.5
SLW-1080	6.4	6.6	9.5	M6	4.4	10	TR 10 x 2	17	TR 10 x 2*	14.5
SLW-1660	8.6	9.0	11	M8	5.5	16	TR 14 x 4	20	TR 14 x 4*	18.5
SLW-2080	8.6	9.0	40	M8	5.5	20	TR 18 x 4	26	12 h9	23.0

* leadscrew end unmachined; ** Carriages also in 100, 150, 200 and 250 mm lengths available on request

delivery 2–3 days
time ► page 895

prices price list online
www.igus.eu/eu/DryLinSHT

order part number
example SLW-0630