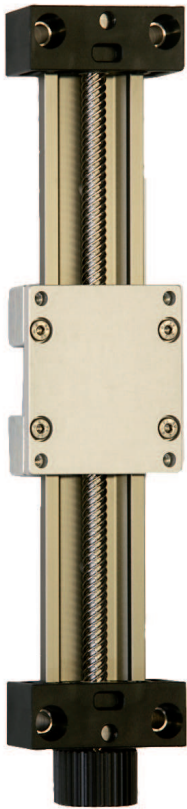


DryLin® SHT | Product Range | High Helix Leadscrew

SLWS – Compact with leadscrew

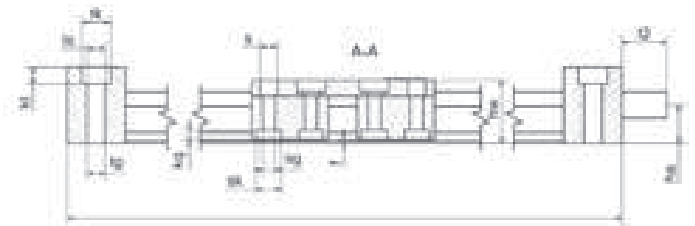
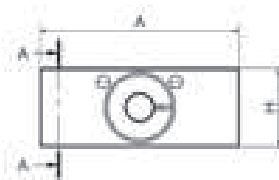
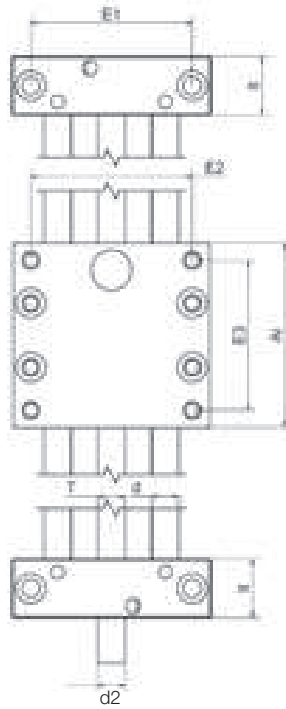


- Lead 8 x 15 mm
 - Flat and compact
 - High torsional stability stiffness
 - Hard anodized aluminum rail
 - Available accessories
- ▶ page 922



Order key
complete ▶ page 897

SLWS-0630



Technical Data

Part number*	Max. length of stroke	Weight	Additional	Max. static load-bearing capacity	
		[kg]	(per 100 mm) [kg]	axial [N]	radial [N]
SLWS-0630	300	0.2	0.08	50	200

Dimensions [mm]

Part number	A	Al	H	E1	E2	E3	l	hw	f	lt	tk	ts	tg
	-0.3	-0.3		±0.15	±0.15	±0.15				±0.1			
SLWS-0630	54	60	20	40	45	51	100	17.5	1.2	20	11	6.2	-

Part number	kt	s	sk	sg	kq	d	T	l2	d2	ha
	±0.1									
SLWS-0630	8.0	4.5	7.0	M4	2.0	6	M8	15	8	9.5

* other sizes for SLW-type with high helix thread on request



delivery 2–3 days
time



prices price list online
www.igus.eu/eu/DryLinSHT



order part number
example SLWS-0630