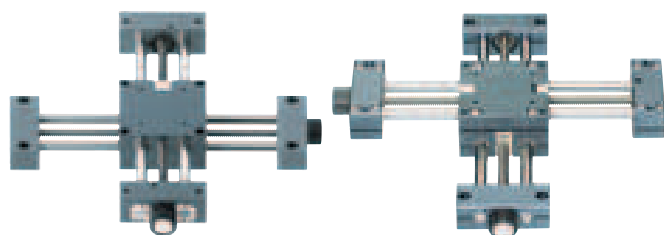


# DryLin® SHT | Product Range | XY-Tables

## SHT – XY-table standard/preload



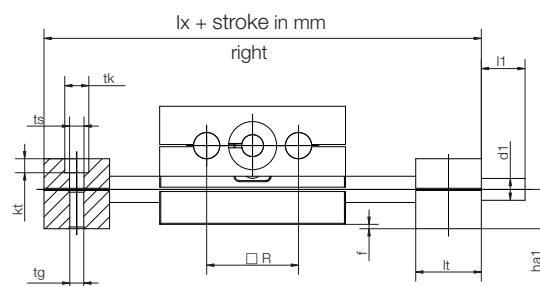
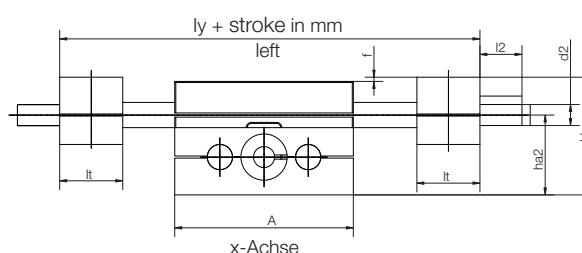
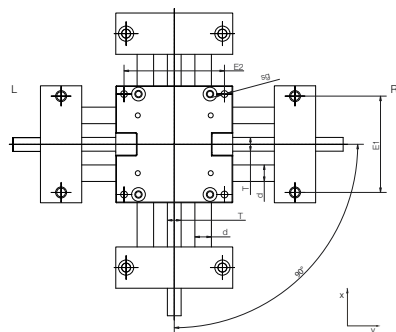
DryLin® SHT

DryLin® SHT-PL



Order key  
complete ▶ page 897

### SHT-XY-12-EWM-PL



- High precision, extreme stiffness and accurate alignment due to the single-piece carriage
- Available as standard and preload version
- Lubrication-free and corrosion-resistant
- Adjustments by trapezoidal thread
- Assembly of upper unit with left or right adjustment possible
- Available accessories ▶ page 922

### Dimensions [mm]

Part number	A	H	E1	E2	Base length	Base length	R	f	lt	tk	ts	tg	kt
	-0.3		±0.15	±0.15	lx	ly			±0.1				
SHT-XY-12	85	56	70	73	145	145	42	2	30	11	6.6	M8	6.4
SHT-XY-12-PL	85	56	70	73	145	145	42	2	30	11	6.6	M8	6.4
SHT-XY-20-EWM-PL	130	86	108	115	202	202	72	2	36	15	9.0	M10	8.6

### Dimensions [mm]

Part number	sg	d	T	l1	d1		l2	d2		ha1	ha2	W
					Standard	Alternative		Standard	Alternative			
SHT-XY-12	M6	12	TR 10 x 2	17	TR 10 x 2	6 h9	17	TR 10 x 2	6 h9	18	38	20
SHT-XY-12-PL	M6	12	TR 10 x 2	17	TR 10 x 2	6 h9	17	TR 10 x 2	6 h9	18	38	20
SHT-XY-20-EWM-PL	M8	20	TR 18 x 4	26	TR 18 x 4	12 h9	26	12 h9	-	23	63	40

The hand wheel on the y-axis can be ordered fitted to the left or the right side.

Left: SHT-XY-12-AWM-L-200-300 for 200 mm stroke length on the x-axis and 300 mm on the y-axis

Right: SHT-XY-12-AWM-R-200-300 for 200 mm stroke length on the x-axis and 300 mm on the y-axis



delivery 4–8 days  
time



prices price list online  
www.igus.eu/eu/DryLinSHT



order part number  
example SHT-XY-12-PL