



## EPIC® DATA PB M 12

Field mountable M 12 BUS-connectors, shielded for PROFIBUS



### Benefits

- Quick and easy on-site assembly
- For creating of individual cable lengths
- Cost efficient and rational wiring for BUS installations
- Space-saving due to compact dimensions

### Product features

- Screened version
- Connector M 12, B-coded
- PG9- / PG11-thread
- Screw connection

### Suitable cables

- Bus system PROFIBUS-DP/FMS/FIP
- UNITRONIC® BUS PB M 12 Page 352

### Technical data

	ETIM 5.0 Class-ID: EC002062 ETIM 5.0 Class-Description: Sensor-actuator connector
	<b>Material</b> Contact: CuSn Contact surface: Au Contact carrier: PA66 Sealing: NBR Knurl: Nickel-plated brass Gripping body: Zinc die-cast, nickel-plated
	<b>Protection rating</b> IP67
	<b>Ambient temperature (operation)</b> Plug/socket -40°C to +85°C
	<b>Coding</b> B - inverse (PROFIBUS)
	<b>Rated current (A)</b> 4 A

Article number	Article designation	Number of pins	Cross-section in mm <sup>2</sup>	Cable diameter in mm	Rated voltage (V)	PU
<b>Plug, straight</b>						
22260653	AB-C5-M 12MSB-PG9-SH-AU	5	0.25 - 0.75	6 - 8.5	60	1
22262078	AB-C5-M 12MSB-PG 11-SH-AU	5	0.25 - 0.75	8 - 10	60	1
<b>Socket, straight</b>						
22260646	AB-C5-M 12FSB-PG9-SH-AU	5	0.25 - 0.75	6 - 8.5	60	1
22260889	AB-C5-M 12FSB-PG 11-SH-AU	5	0.25 - 0.75	8 - 10	60	1

Photographs are not to scale and do not represent detailed images of the respective products.



## EPIC® DATA PB M12/M12

PROFIBUS M12 control cabinet feed-through, shielded



### Benefits

- M12 connector on both sides
- Plug & Play for flexible connection solutions

### Application range

- Mechanical and plant engineering

### Product features

- For PROFIBUS applications
- Bipolar/screw mounting

### Product Make-up

- 5-pin control cabinet feed-through, M12 B-coded
- M12 plug on M12 socket
- Screened version

### Suitable cables

- UNITRONIC® BUS PB M12 Page 352
- UNITRONIC® BUS PB M12-M12

### Technical data

**ETIM** ETIM 5.0 Class-ID: EC002062  
ETIM 5.0 Class-Description: Sensor-actuator connector

**Material**  
Contact: CuZn  
Contact surface: Au (gold)  
Contact carrier: PA 66  
Knurl: Nickel-plated brass  
Sealing: FKM

**IP** Protection rating  
IP67

**Ambient temperature (operation)**  
Plug/socket  
-25 °C to +85 °C

**Coding**  
B - inverse (PROFIBUS)

**Rated current (A)**  
4 A

Article number	Article designation	Number of pins	Rated voltage (V)	PU
<b>Control cabinet feed through</b>				
22262021	AB-C5-DSI-M12MSB-M12FSB-M16-SH	5	60	1

Photographs are not to scale and do not represent detailed images of the respective products.



## EPIC® DATA PB TR M12

M12 Terminating resistor for PROFIBUS



### Benefits

- Cost efficient termination of a bus systems
- Space-saving due to compact dimensions
- Robust design

### Application range

- Mechanical and plant engineering

### Product features

- 150 Ω terminating resistor for PROFIBUS

### Product Make-up

- Straight connector M12 with integrated termination resistor
- Straight connector M12, with integrated termination resistor, shielded

### Info

- Fully suitable for industrial use

### Technical data

**ETIM** ETIM 5.0 Class-ID: EC001604  
ETIM 5.0 Class-Description: Fieldbus, decentr. periphery - communication module

**IP** Protection rating  
IP65/IP67 (plug)  
IP 67 (socket)

**Ambient temperature (operation)**  
-25 °C to +90 °C (plug)  
-40 °C to +85 °C (socket)

**Contact material**  
CuSn

**Coding**  
B - inverse (PROFIBUS)

**Rated current (A)**  
4 A

Article number	Article designation	Number of pins	Rated voltage (V)	PU
<b>Plug, unshielded (terminating resistor)</b>				
22260722	AB-C4-M12MS-PB-TR	4	60	5
<b>Socket, shielded (terminating resistor)</b>				
22261001	AB-C5-M12FS-PB-TR-SH	4	32	1

Photographs are not to scale and do not represent detailed images of the respective products.

### Accessories

- EPIC® DATA PB M12T refer to page 355



**Info**

- Fully suitable for industrial use

**Benefits**

- Cost efficient and rational wiring for PROFIBUS installations
- Space-saving due to compact dimensions
- Robust design

**Application range**

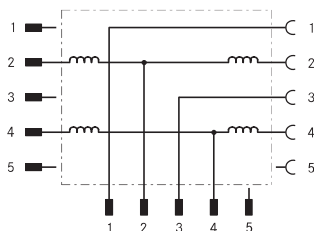
- Mechanical and plant engineering

**Product features**

- For PROFIBUS stubs
- Screened version

**Product Make-up**

- 4-pin PROFIBUS T-connector
- M12 plug to M12 plug and M12 socket



**EPIC® DATA PB M12T**

M12 T distributor, shielded for PROFIBUS



**Technical data**

**ETIM** ETIM 5.0 Class-ID: EC001855  
ETIM 5.0 Class-Description: Sensor-actuator patch cord

**Material**  
Contact: CuSn  
Contact surface: Ni/Au  
Contact carrier: PUR  
Knurl: Nickel-plated brass  
Gripping body: PUR  
Sealing: VITON®

**IP** **Protection rating**  
IP 67

**Ambient temperature (operation)**  
Plug/socket  
-25°C to +80°C

**Coding**  
B - inverse

**Rated current (A)**  
4 A

Article number	Article designation	Number of pins	Rated voltage (V)	PU
<b>T distributor</b>				
22260761	AB-C2-M12T-2XM12FS PB	4	60	1

Photographs are not to scale and do not represent detailed images of the respective products.

**Accessories**

- EPIC® DATA PB TR M12 refer to page 354



**EPIC® DATA PB CCR**

Cable coupler round, shielded for e.g. sensor /PROFIBUS /CAN cables



**Benefits**

- Time-saving assembly with IDC connection technology
- Optimum EMC protection with 360 ° shielding

**Application range**

- To extend existing cable systems
- Repairkit for damaged cables

**Product features**

- For core outer diameter 0.75 - 2.0 mm
- 5-pin cable coupler round
- Screened version

**Technical data**

**Material**  
Contact: CuZn  
Contact surface: Ni/Au  
Knurl: Zinc die-cast, nickel-plated  
Gripping body: Zinc die-cast, nickel-plated

**IP** **Protection rating**  
IP65/IP67

**Ambient temperature (operation)**  
-5°C to +50°C

**Rated current (A)**  
4 A

Article number	Article designation	Number of pins	Cross-section in mm²	Cable diameter in mm	Rated voltage (V)	PU
<b>Cable coupler round</b>						
21700641	AB-C5-CCR-SH	5	0.14 - 0.5	5 - 9.7	60	1

Photographs are not to scale and do not represent detailed images of the respective products.